

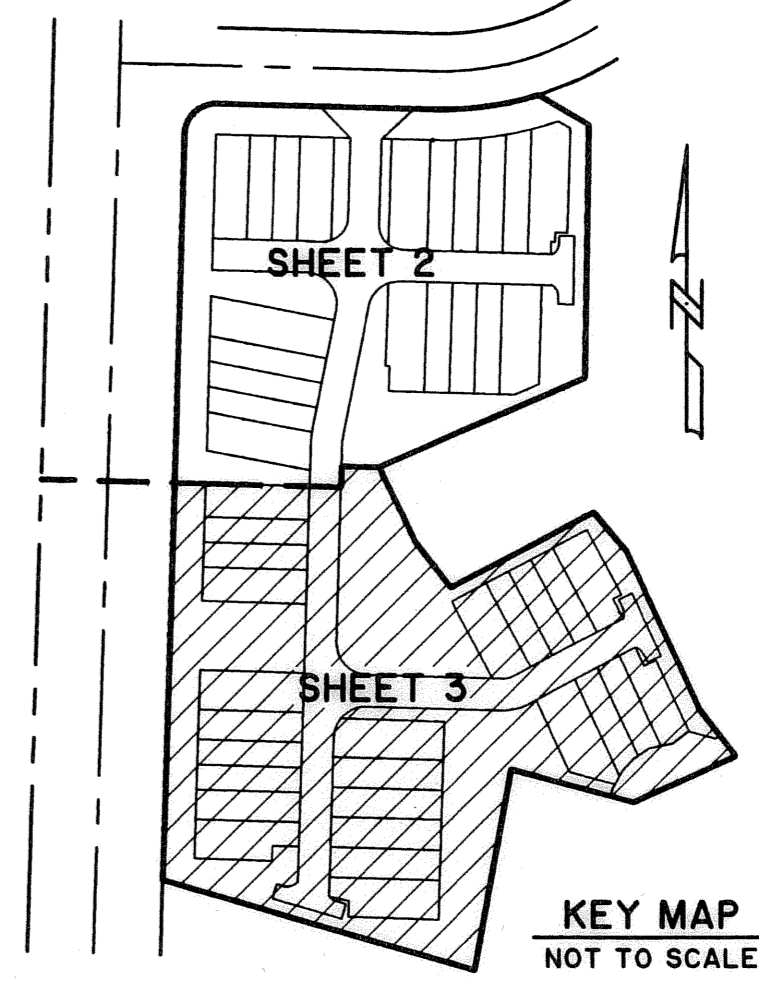
BELLA VITA

BEING A PORTION OF SECTION 23, TOWNSHIP 43 SOUTH, RANGE 41 EAST,
VILLAGE OF ROYAL PALM BEACH, PALM BEACH COUNTY, FLORIDA.

MARCH, 2004 SHEET 3 OF 3

46

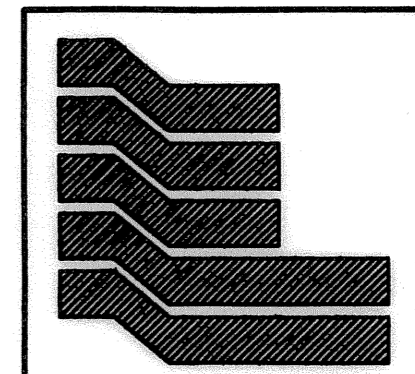
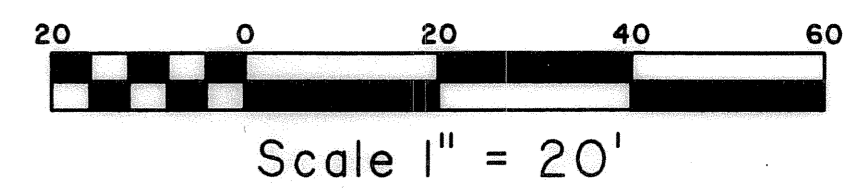
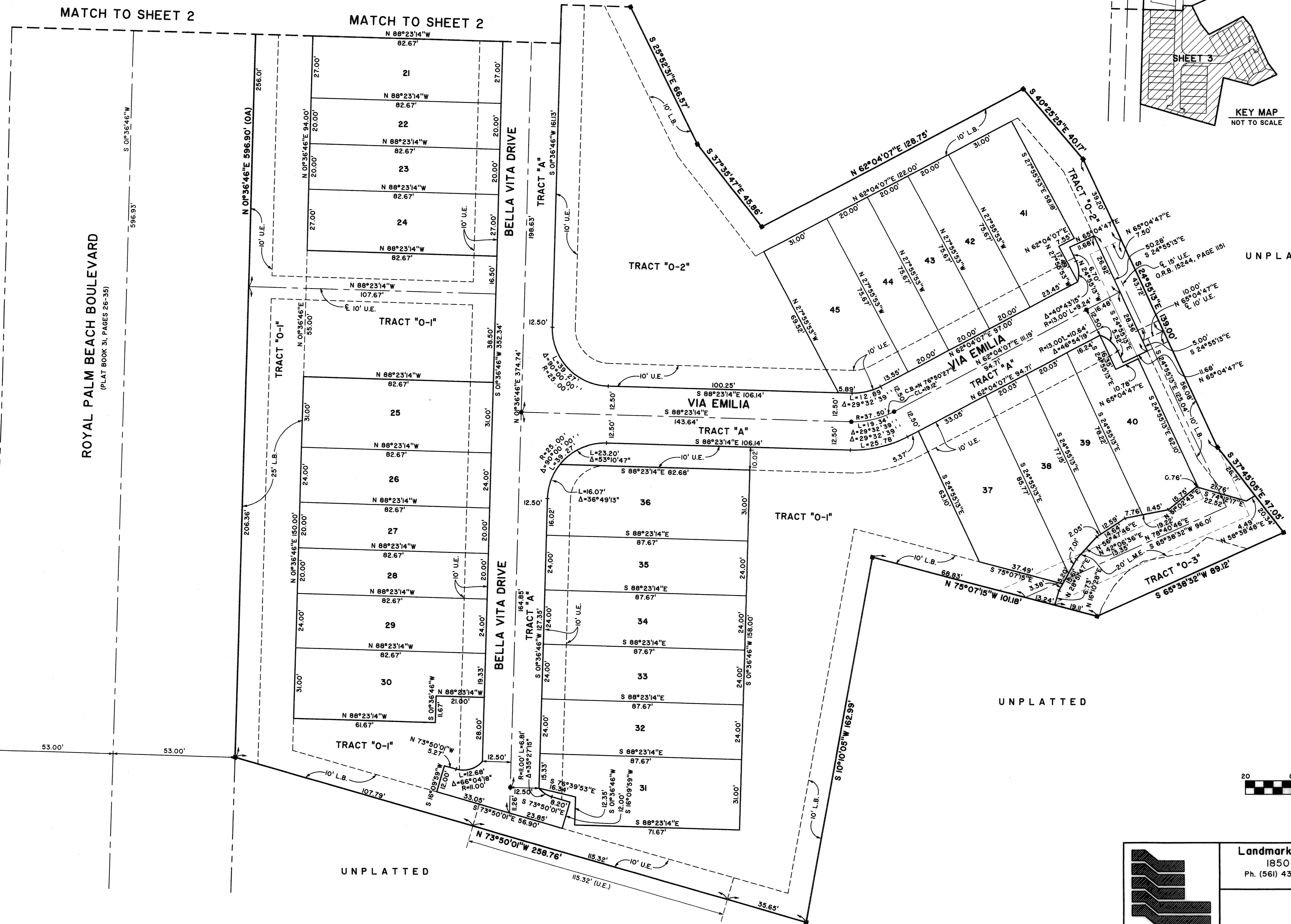
STATE OF FLORIDA SS
COUNTY OF PALM BEACH
THIS PLAT WAS FILED FOR RECORD AT _____
M., THIS _____ DAY OF _____ 2004
AND DULY RECORDED IN PLAT BOOK NO. _____
ON PAGE _____
DOROTHY H. WILKEN,
CLERK OF THE CIRCUIT COURT
BY _____ D.C.



MATCH TO SHEET 2

MATCH TO SHEET 2

ROYAL PALM BEACH BOULEVARD
(PLAT BOOK 31, PAGES 26-35)



Landmark Surveying & Mapping Inc.
1850 Forest Hill Boulevard
Ph. (561) 433-5405 Suite 100 W.P.B. Florida
LB # 4396

BELLA VITA